

Royal Preston Hospital Emergency Department

Monthly Bulletin: July 2011 to June 2012

This bulletin provides a breakdown of all injury attendances at Royal Preston Hospital Emergency Department (ED) between July 2011 and June 2012.

Between July 2011 and June 2012 there were 30,384 attendances to Royal Preston Hospital ED. The month with the highest attendances was March with 2,792 (**Figure 1**). There were more male than female attendances presenting at Royal Preston Hospital ED (males=16,800; 55%).

Figure 2 illustrates age group of ED attendances for each month. For all injuries the highest proportions of attendances were for persons aged 30-59 (n=8,957; 29%) and 15-29 (n=8,838; 29%) years old.

Table 1 details the injury group of ED attendances. In almost two-fifths (39%) of attendances, injury group was recorded as fall. Other injury accounted for 36% of attendances, sports injury 10%, road traffic collisions (RTC) 9% and assaults 5%.

Table 2 illustrates the location of incident for patients attending the Royal Preston Hospital ED. The primary locations of injury were home (33%) and public place (28%). The discharge destination for injury attendances is displayed in **Table 3**. It indicates that almost half (49%) of attendances were discharged with no follow-up treatment. Nearly a

fifth (18%) of attendances were discharged into the care of their GP and 11% went to the fracture clinic.

Assault attendances

Between July 2011 and June 2012 there were 1,591 assault attendances to Royal Preston Hospital ED. The month with the highest attendance was September with 170 attendances (**Figure 3**). There were more male than female assault attendances presenting at Royal Preston Hospital ED (males=1,166; 73%).

Table 4 details the age group of assault attendances for each month. The majority of ED assault attendances were aged 15-29, (n=916; 58%) and over a third (36%) were aged 30-59 (n=565) years.

Table 5 illustrates the incident location for assault attendances to Royal Preston Hospital ED. The primary incident locations for assault attendances were in a public place (58%), followed by home (15%) and other (12%).

The discharge destination for assault attendances is displayed in **Table 6**. It indicates that nearly half (45%) of assault attendances were discharged with no follow-up treatment. Over a third (35%) of assault attendances required follow-up treatment and 8% were admitted to hospital.

Figure 1: Gender of ED injury attendances by month, July 2011 to June 2012

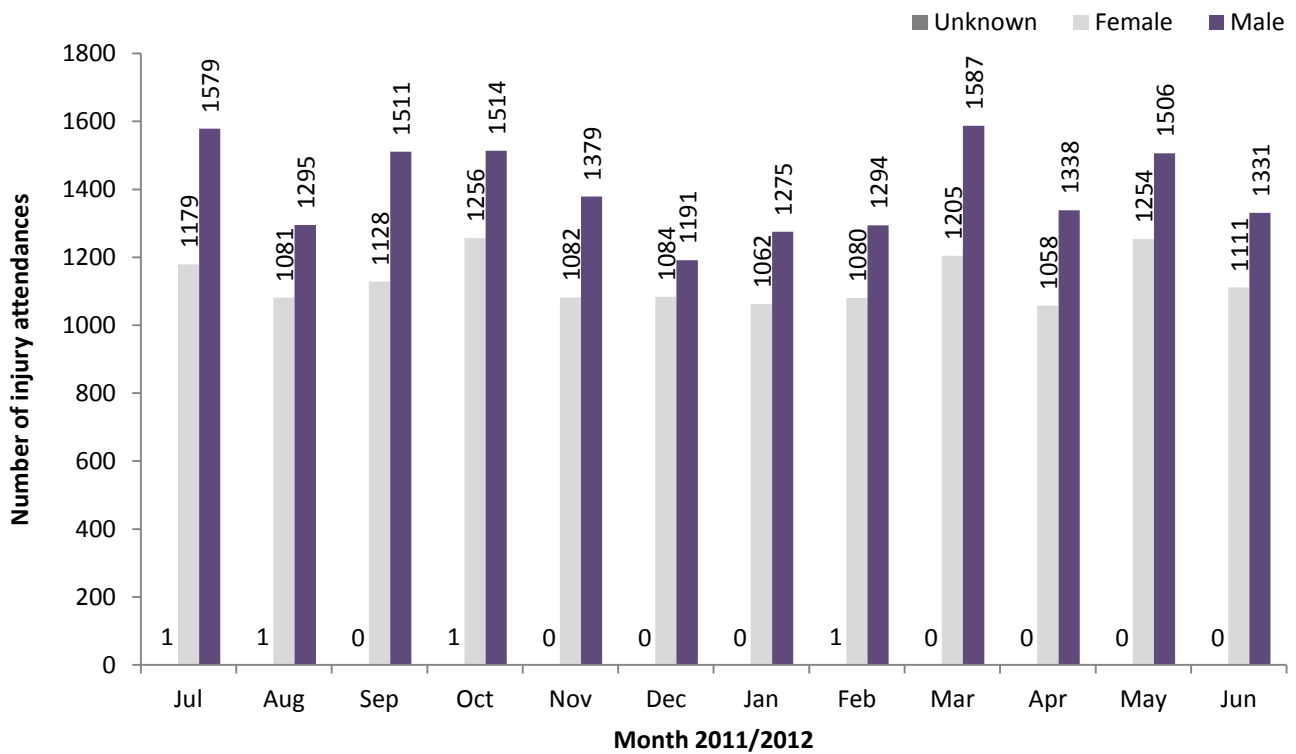


Figure 2: Percentage of ED injury attendances by age group and month, July 2011 to June 2012

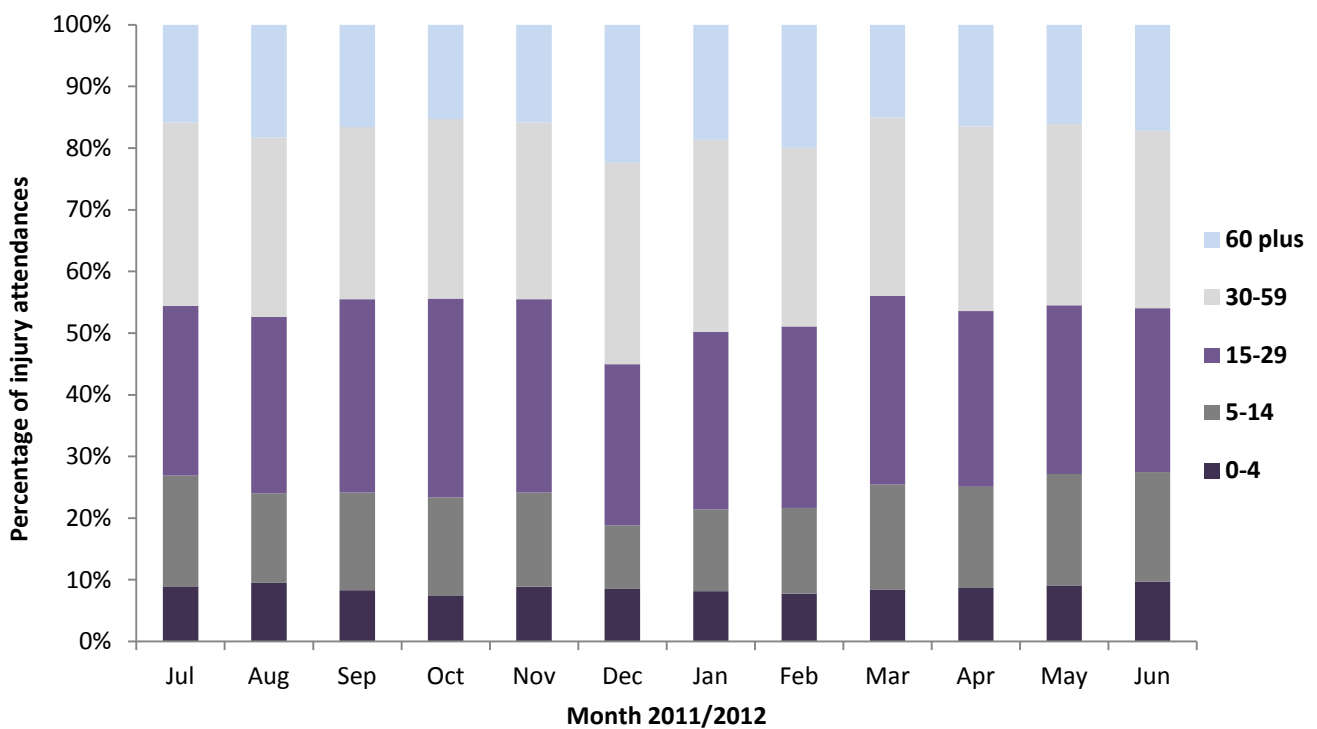


Table 1: ED injury attendances by injury group and month, July 2011 to June 2012

Injury group	Jul	Aug	Sep	Oct	Nov	Dec	Jan	Feb	Mar	Apr	May	Jun	Total	%
Fall	1094	950	966	1031	854	1038	940	1066	997	856	1056	991	11839	39
Other injury	1079	893	940	934	867	743	812	722	1082	925	1115	939	11051	36
Sports injury	208	178	267	325	298	124	196	230	337	276	274	179	2892	10
RTC	215	217	277	295	295	226	249	206	233	209	170	182	2774	9
Assault	139	123	170	156	135	119	122	126	115	118	135	133	1591	5
Deliberate self-harm	24	16	19	30	12	25	18	25	28	12	10	18	237	1
Total	2759	2377	2639	2771	2461	2275	2337	2375	2792	2396	2760	2442	30384	100

Table 2: ED injury attendances by incident location and month, July 2011 to June 2012^{1,2,3}

Location	Jul	Aug	Sep	Oct	Nov	Dec	Jan	Feb	Mar	Apr	May	Jun	Total	%
Home	849	803	767	812	771	852	814	825	855	815	881	849	9893	33
Public place	869	777	804	876	775	613	570	601	660	598	682	606	8431	28
Sport	236	175	239	271	254	122	176	206	311	269	251	179	2689	9
Work	230	198	223	239	196	171	223	195	242	200	248	209	2574	8
Other	142	146	200	214	135	196	197	222	237	229	211	197	2326	8
Educational establishment	113	6	177	178	190	81	155	148	223	77	175	112	1635	5
Other persons home	84	69	71	65	56	89	64	48	66	83	77	62	834	3
Garden	77	66	43	23	19	18	15	24	51	41	98	74	549	2
Public building	15	16	11	21	5	90	75	44	47	20	15	29	388	1
Holiday	48	59	43	32	15	10	13	21	19	29	31	52	372	1
Public park/playground	55	31	28	18	10	5	6	16	30	15	51	44	309	1
Nursery	12	13	10	12	15	7	8	15	18	8	13	11	142	0
Hospital	10	10	5	***	10	11	***	***	15	***	11	8	94	0
Prison	5	***	10	***	7	***	5	***	9	***	9	6	67	0
Special event	14	***	***	***	***	5	7	***	***	***	7	***	50	0
Public transport	***	***	***	***	***	***	5	***	7	***	***	***	25	0
Bus station	***	***	***	***	***	***	***	***	***	***	***	***	6	0
Total	2759	2377	2639	2771	2461	2275	2337	2375	2792	2396	2760	2442	30384	100

Table 3: ED injury attendances by discharge destination and month, July 2011 to June 2012^{4,5}

Discharge destination	Jul	Aug	Sep	Oct	Nov	Dec	Jan	Feb	Mar	Apr	May	Jun	Total	%
Discharged - no follow-up	1258	1284	1386	1459	1225	1049	1130	1145	1373	1163	1304	1150	14926	49
Discharged - follow-up by GP	531	338	367	387	395	415	410	455	529	487	600	544	5458	18
Fracture clinic	302	258	276	297	275	254	241	230	295	265	297	276	3266	11
Admitted RPH	268	202	235	222	224	225	204	210	185	206	228	177	2586	9
Other	83	83	77	105	104	74	98	73	108	75	71	55	1006	3
Left before being treated	109	37	75	79	55	71	60	97	97	62	85	86	913	3
A&E clinic	74	75	82	83	74	71	77	71	74	50	74	35	840	3
Outpatient clinic	74	55	67	83	59	66	64	41	74	52	67	68	770	3
Other healthcare professional	25	30	49	37	30	28	35	28	38	23	20	34	377	1
Transferred to other HCP	19	8	15	6	9	11	8	10	9	7	***	<6	110	0
Left having refused treatment	12	***	***	9	9	<6	8	9	7	***	8	8	87	0
Police custody	***	***	6	***	***	6	***	***	***	***	***	***	37	0
Admitted CDGH	***	***	***	***	***	***	***	***	***	***	***	***	8	0
Total	2759	2377	2639	2771	2461	2275	2337	2375	2792	2396	2760	2442	30384	100

Assaults

Table 4: ED assault attendances by age group and month, July 2011 to June 2012

Age group	Jul	Aug	Sep	Oct	Nov	Dec	Jan	Feb	Mar	Apr	May	Jun	Total	%
0-4	***	***	***	***	***	***	***	***	***	***	***	***	9	1
5-14	11	***	7	7	5	***	6	***	6	6	12	7	77	5
15-29	77	76	96	100	78	77	64	71	62	60	72	83	916	58
30-59	47	43	64	46	51	35	49	50	44	49	48	39	565	36
60 plus	***	***	***	***	***	***	***	***	***	***	***	***	24	2
Total	139	123	170	156	135	119	122	126	115	118	135	133	1591	100

¹ Educational establishment includes: educational establishment; school other; school; school playground; and school sport. 'Public place' includes public place and playing out.

² Please note that all numbers less than five have been suppressed (with ***) in line with patient confidentiality and if there is only one number less than five in a category then two numbers will be suppressed to prevent back calculations from totals.

³ Please note percentages might not add to one hundred due to rounding.

⁴ Admitted to RPH includes: admitted to Royal Preston Hospital (RPH); and, admitted to the Avondale Unit. Other includes: primary care; other; dead on arrival; sea and waterway; and died in department. HCP=Health care provider and GP=general practitioner.

⁵ 'Admitted to CDGH' includes: admitted; admitted to Chorley and South Ribble Hospital (CDGH); admitted to Healey/Yarrow Ward.

Figure 3: Number of ED assault attendances by gender and month, July 2011 to June 2012

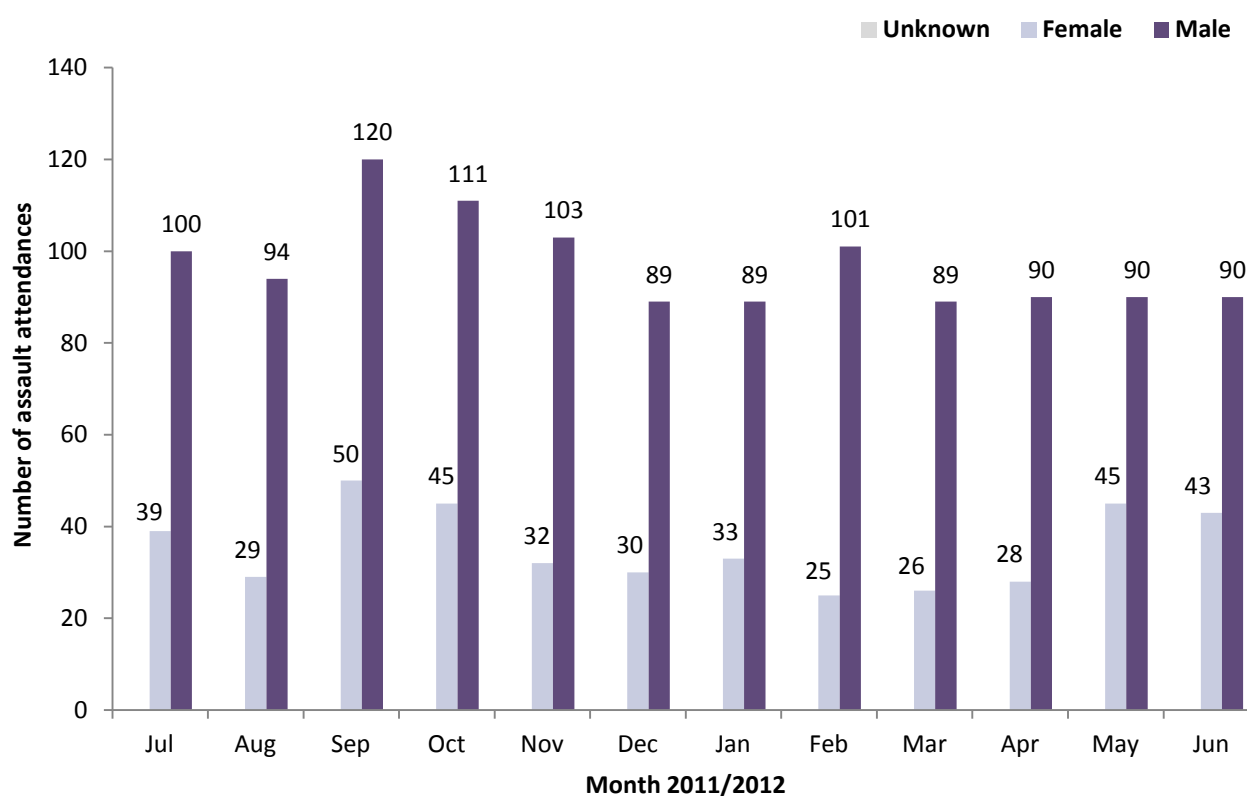


Table 5: ED assault attendances by incident location and month, July 2011 to June 2012

Location	Jul	Aug	Sep	Oct	Nov	Dec	Jan	Feb	Mar	Apr	May	Jun	Total	%
Public place	101	103	106	110	92	56	53	60	53	62	69	56	921	58
Home	21	15	25	17	18	18	26	19	18	19	21	24	241	15
Other	***	***	14	14	6	23	13	20	13	21	22	36	186	12
Work	***	***	10	6	6	5	***	5	6	5	11	8	69	4
Public building	***	***	***	***	***	10	16	12	13	***	***	***	59	4
Other persons home	6	***	5	***	***	***	***	6	***	5	***	***	45	3
Educational establishment	***	***	***	***	6	***	***	***	***	***	***	***	26	2
Prison	***	***	***	***	***	***	***	***	5	***	***	***	16	1
Public park/playground	***	***	***	***	***	***	***	***	***	***	***	***	10	1
Hospital	***	***	***	***	***	***	***	***	***	***	***	***	5	0
Bus station	***	***	***	***	***	***	***	***	***	***	***	***	***	0
Garden	***	***	***	***	***	***	***	***	***	***	***	***	***	0
Holiday	***	***	***	***	***	***	***	***	***	***	***	***	***	0
Nursery	***	***	***	***	***	***	***	***	***	***	***	***	***	0
Special event	***	***	***	***	***	***	***	***	***	***	***	***	***	0
Sport	***	***	***	***	***	***	***	***	***	***	***	***	***	0
Total	139	123	170	156	135	119	122	126	115	118	135	133	1591	100

Table 6: ED assault attendances by discharge destination and month, July 2011 to June 2012

Discharge destination	Jul	Aug	Sep	Oct	Nov	Dec	Jan	Feb	Mar	Apr	May	Jun	Total	%
Discharged	60	64	87	68	62	51	46	62	53	48	54	59	714	45
Follow-up	45	42	49	52	48	44	50	38	36	44	59	51	558	35
Other	20	8	22	20	16	11	12	19	17	16	16	16	193	12
Admitted	14	9	12	16	9	13	14	7	9	10	6	7	126	8
Total	139	123	170	156	135	119	122	126	115	118	135	133	1591	100

Published August 2012

Johnathan Rooney (TIIG Officer), Val Upton (Senior Public Health Researcher / Analyst)
 Centre for Public Health, Liverpool John Moores University, 2nd Floor, Henry Cotton Campus, Liverpool, L3 2ET
 Tel: 0151 231 4539 Email: j.rooney@ljmu.ac.uk

Website: www.tiig.info (please note data requests should be made through the website)